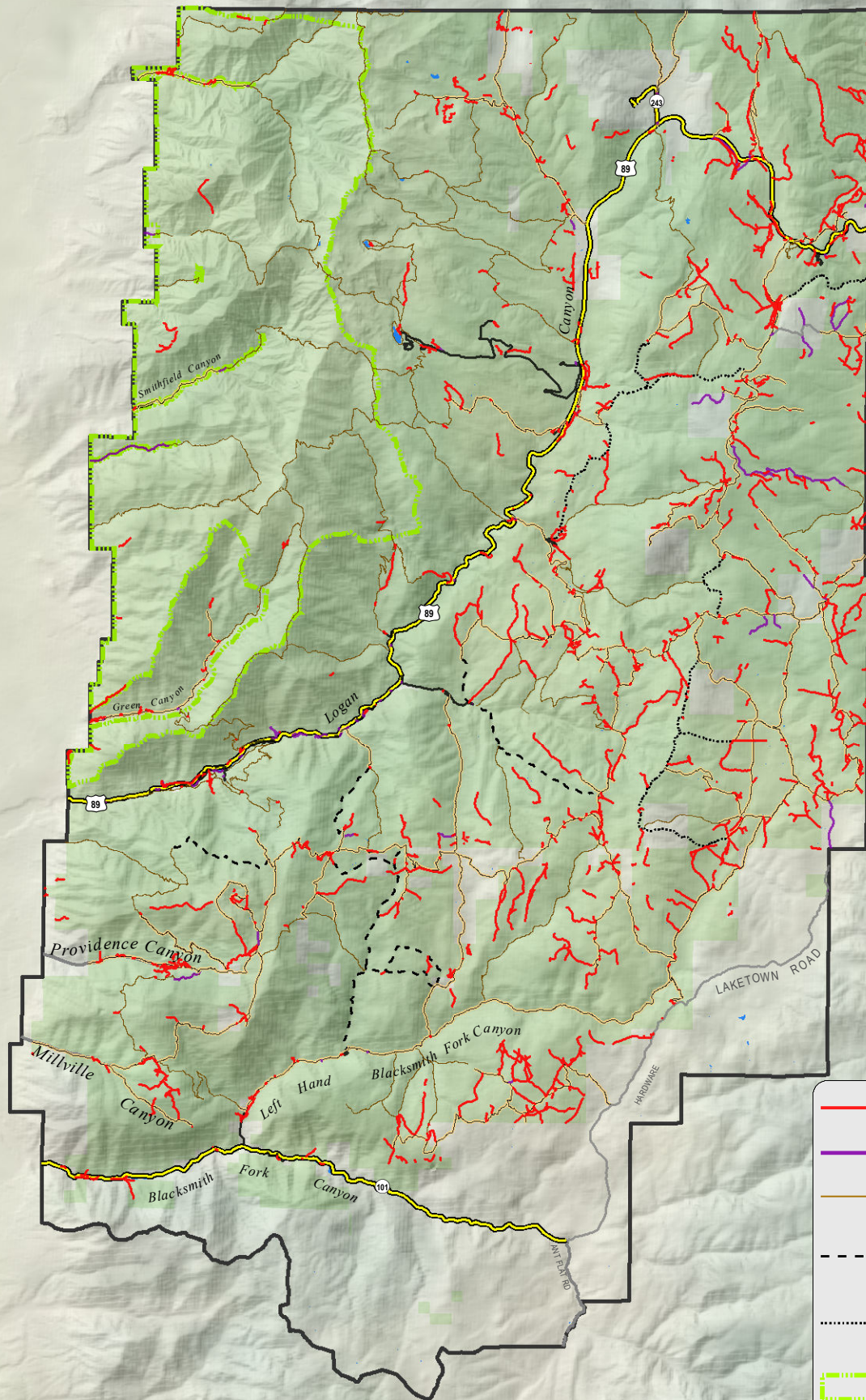


Bear Lake



- Unauthorized Routes
- Closed Roads
- Non-Motorized Trails
- - - Trails Open to Motorcycles Only
- ⋯ Trails Open to Wheeled Vehicles 50" or less
- Wilderness Area
- USFS Lands
- Logan Ranger District

Data Source:  
 Unauthorized Use Feature Inventory on the Logan Ranger District, Uinta-Wasatch-Cache National Forest, October 2009.  
 Motor Vehicle Use GIS Data, June 2007  
 U.S. Forest Service

